

WAT-03U2D

1/3" High Sensitivity USB2.0 HD Water Resistant Camera

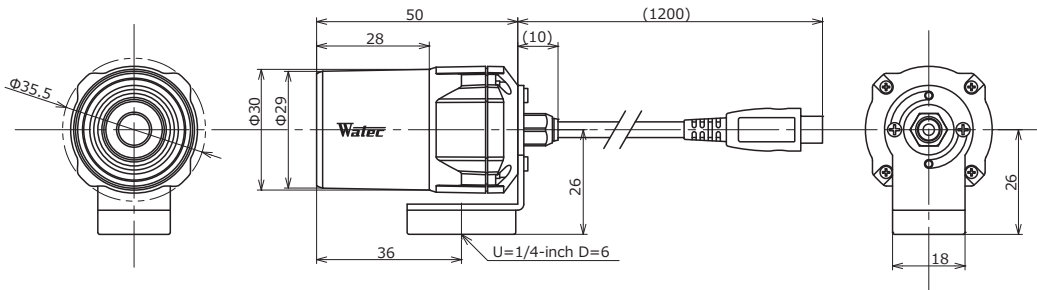
IPX7 Water resistance



Key features

- High Sensitivity 1.3 Mega pixel CMOS sensor
- Min. illumination 0.04 lx F2.0 (AGC ON=42dB, Shutter=OFF)
0.01 lx F2.0 (AGC ON=42dB, Shutter=1/7.5 sec.)
- Frame rate : 30fps (HD)、60fps (VGA)
- Water resistant structure for outdoor use

Dimensions



Specifications

| | | |
|-----------------------------------|---|--|
| Pick-up element | 1/3 inch CMOS image sensor | |
| Number of effective pixels | 1305(H) × 977(V) | |
| Unit cell size | 3.75μm(H) × 3.75μm(V) | |
| Imaging system | RGB primary color bayer arrangement mosaic filters on chip | |
| Synchronizing system | Internal | |
| Scanning system | Progressive | |
| Output size | 1280×960, 1280×720, 640×480, 320×240 | |
| Max. frame rate | 60 fps | |
| Video compression | MJPEG, YUY2 | |
| Video output | USB Video Class (Compatible) | |
| Minimum illumination | 0.04 lx F2.0 (AGC ON=42dB, Shutter=OFF) | |
| | 0.01 lx F2.0 (AGC ON=42dB, Shutter=1/7.5 sec.) | |
| S/N | - | |
| Function settings | Camera Viewer | |
| AE mode | Fixed | 1/15, 1/7.5, 1/4, 1/2, 1, 2 sec. |
| | EI | 1/30, 1/60, 1/120, 1/250, 1/500, 1/1000, 1/2000, 1/4000, 1/8000 sec. |
| | | 1/30 - 1/8000 sec. |
| White balance | ATW, MWB | |
| AGC | ON | 0 - 42dB |
| | OFF | - |
| MGC | 0 - 72dB (1dB step) | |
| Gamma characteristics | γ=USER (Level adjustable) | |
| Noise reduction | - | |
| Wide dynamic range | - | |
| Lens iris | - | |
| Back light compensation | BLC | |
| White blemish correction | - | |
| Sharpness | Level adjustable | |
| Defog | - | |
| Digital zoom | - | |
| Privacy mask | - | |
| Mirror image | - | |
| Freeze | - | |
| Motion detection | - | |
| Neg.image | - | |
| Interface | USB (High speed) | |
| Power supply | USB +5V | |
| Power consumption | 0.75W (150mA) | |
| Operating temperature | -10 - +50°C | |
| Storage temperature | -30 - +70°C | |
| Operating / Storage humidity | 95% RH or less (Without condensation) | |
| Standard lens | M3620BC-12 (f3.6 F2.0) | |
| Cable length | 1.2m (Max. 3.0m) | |
| Weight | Approx. 85g | |
| Accessories | - | |
| Min. System Requirements | CPU | 800MHz or faster |
| | RAM | 512MB or larger |
| | Others | USB2.0 Port |
| Recommended System Specifications | CPU | Intel® Core TM i Series |
| | RAM | 2GB or larger |
| | Others | USB2.0 Port, 1920×1080 or better resolution display |
| Operation Confirmed OS | Windows 7 32bit/64bit, Windows 8 32bit/64bit, Windows 8.1 32bit/64bit, Windows 10 32bit/64bit, Android 4.0 or newer | |

Options

